

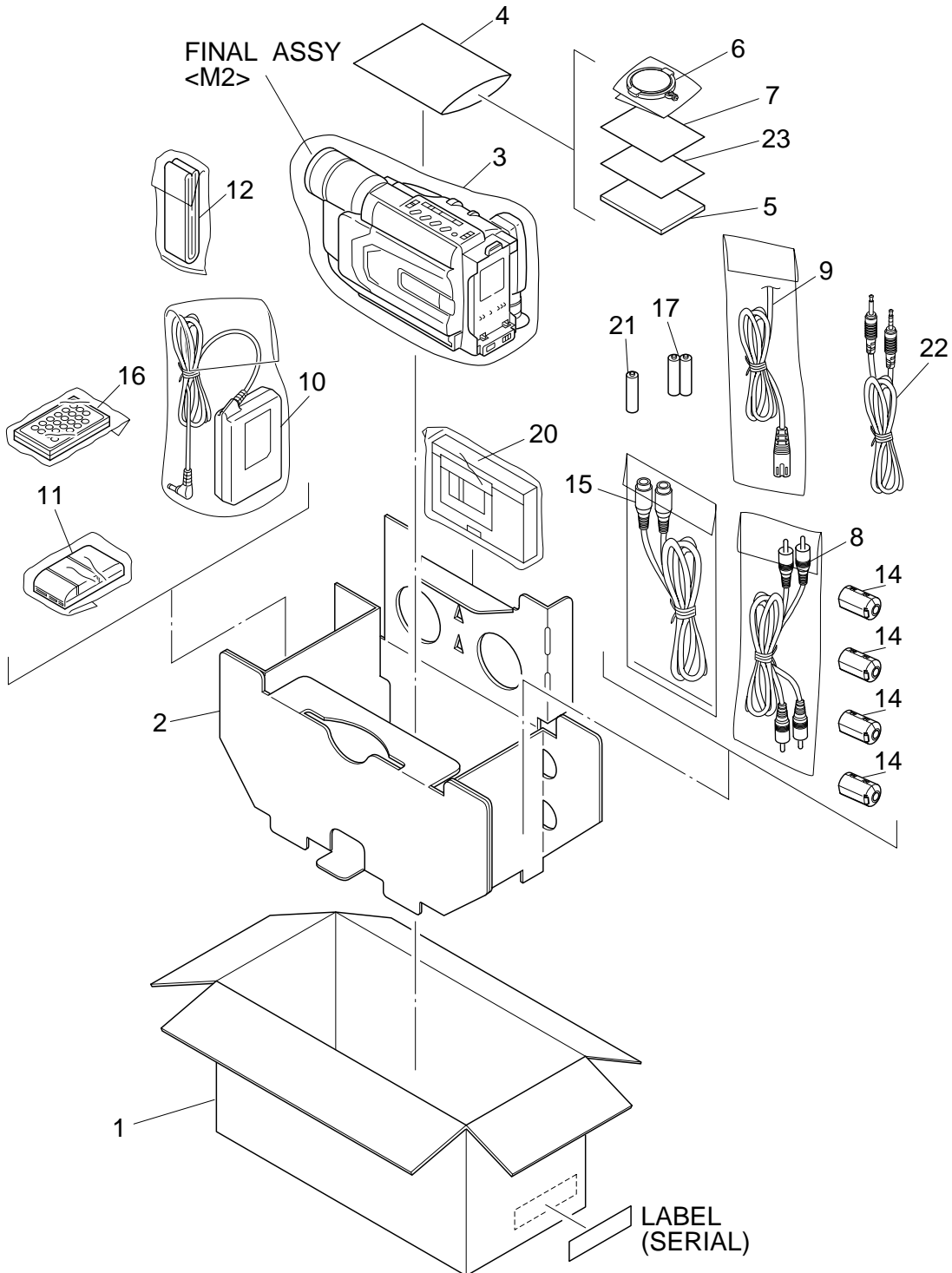
## SECTION 5 PARTS LIST

### SAFETY PRECAUTION

Parts identified by the ⚠ symbol are critical for safety. Replace only with specified part numbers.

#### 5.1 PACKING AND ACCESSORY ASSEMBLY<M1>

The instruction manual to be provided with this product will differ according to the destination.



#	△ REF No.	PART No.	PART NAME, DESCRIPTION
*****			

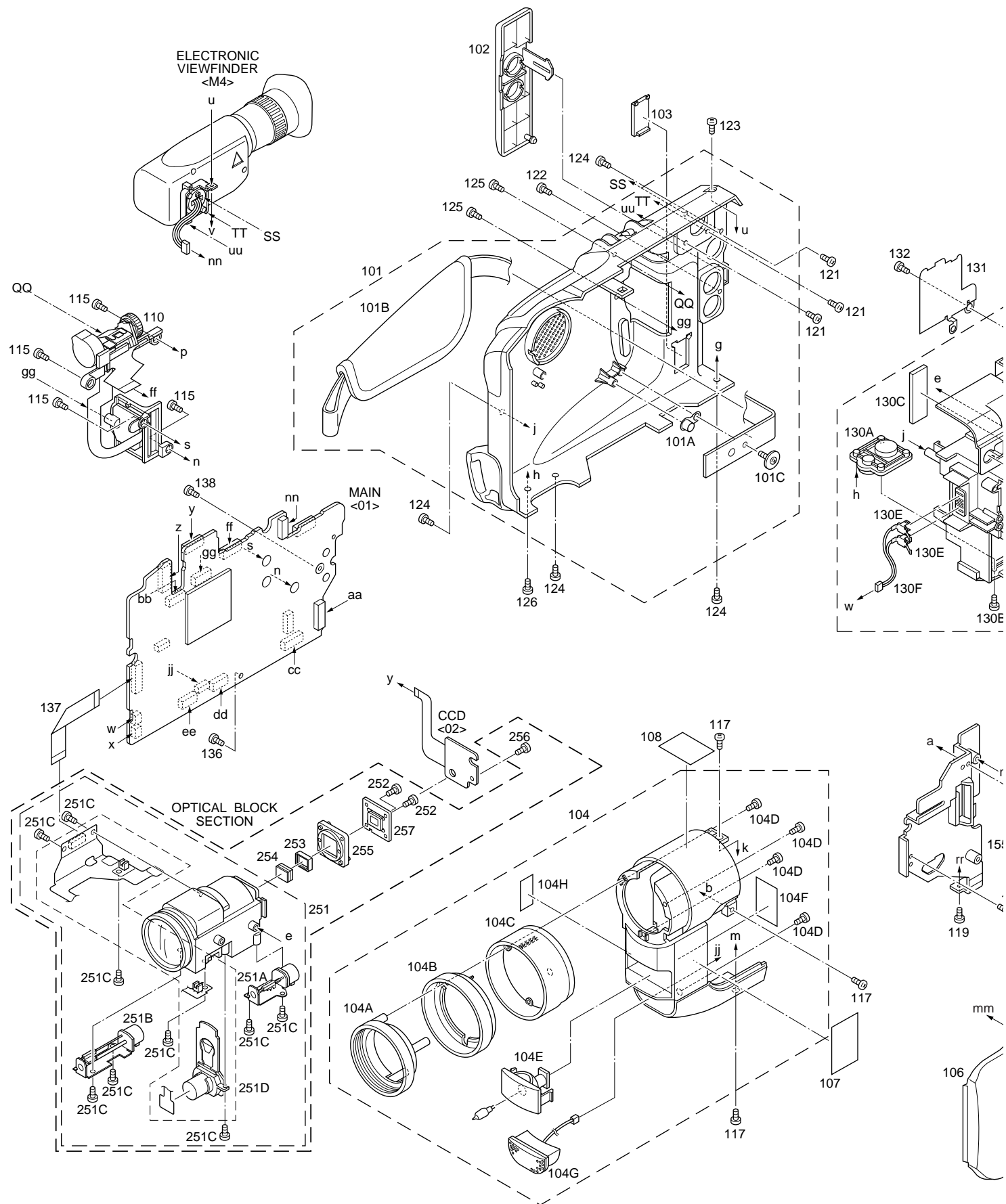
## PACKING AND ACCESSORY ASSEMBLY <M1>

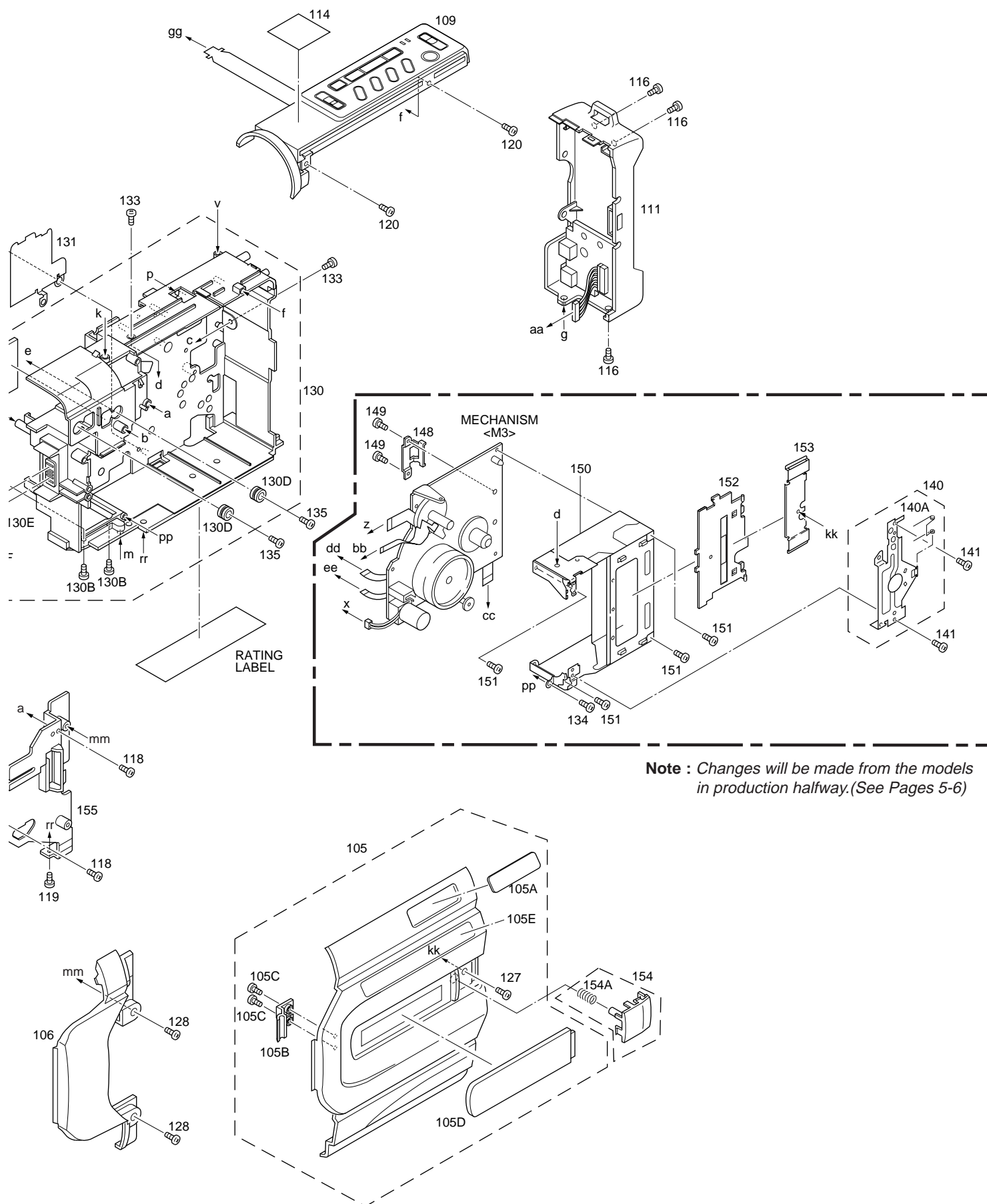
1	LY32054-036A	PACKING CASE,FX36ED
	LY32054-034A	PACKING CASE,SX56ED
2	LY32065-001A	CUSHION
3	LY30023-002A	POLY BAG
4	QPA02003506	POLY BAG
△ 5	LYT0686-001A	INST.BOOK(EN)
△	LYT0686-002A	INST.BOOK(CH)
△	LYT0686-003A	INST.BOOK(RU)
6	LY41538-002B	LENS CAP
7	BT-59011-2	WARRANTY CARD
8	PEAC0362-150	CABLE ASSY(AUDIO/VIDEO)
△ 9	QMPS120-190-JR	POWER CORD
△ 10	LY20688-009A	AC ADAPTER,AP-V10ED
△ 11	YQ10629E	BATTERY PACK,BN-V11U
12	LY20186-001A	SHOULDER STRAP
14	QQR0491-002	CORE FILTER,X3,FX36ED
	QQR0491-002	CORE FILTER,X4,SX56ED
15	QAM0004-003	S CABLE,S-VIDEO CABLE,SX56ED
16	LY20543-002A	REMOTE CONTROLLER,RM-V716U
17	—	BATTERY,AAA(R03)X2
20	YQ31963A-3	C ADAPTER
21	—	BATTERY(R6P TYPE)
22	PEAC0428-150	CABLE ASSY
23	BT-59012-1	GUARANTY CARD

## • INSTRUCTIONS

EN ..... ENGLISH  
 RU ..... RUSSIAN  
 CH ..... CHINESE

## 5.2 FINAL ASSEMBLY <M2> — FOR FX36ED —





# △ REF No.	PART No.	PART NAME, DESCRIPTION
*****		
<b>FINAL ASSEMBLY &lt;M2&gt;</b>		
101	LY20684-004A	LOWER CASE ASSY,SX56ED
	LY20684-002A	LOWER CASE ASSY,FX36ED
101A	LY40081-001A	CAP
101B	LY20682-001A	GRIP BELT
101C	LY30018-003A	SPECIAL SCREW
102	LY31945-001B	COVER(JACK)
103	LY31946-001A	COVER(JIG)
104	LY20683-007B	FRONT COVER ASSY,SX56ED
	LY20683-004B	FRONT COVER ASSY,FX36ED
104A	LY31937-001A	HOOD
104B	LY31938-001A	COVER(HOOD)
104C	LY31936-001A	RING
104D	QYSLSF2060D	SCREW,X4
104E	LY32040-001A	DC LIGHT,SX56ED
	LY30934-015A	COVER(LIGHT),FX36ED
104F	LY30029-0B4A	SPACER(A),SX56ED
104G	LY32043-001A	MICROPHONE
△ 104H	YQ44341-6	CAUTION LABEL,SX56ED
105	LY20680-001D	CASS.COVER(S)ASSY,SX56ED
	LY20680-008D	CASS.COVER(S)ASSY,FX36ED
105A	LY42883-001A	MARK
105B	LY32024-001A	HINGE(C.COVER)
105C	QYSLSF2060D	SPECIAL SCREW,X2
105D	LY32023-001A	WINDOW(S),SX56ED
	LY32023-002A	WINDOW(S),FX36ED
105E	LY32059-001A	STICKER(B),FX36ED
	LY32059-002A	STICKER(B),SX56ED
106	LY10272-005A	UPPER CASE(S),SX56ED
	LY10272-004A	UPPER CASE(S),FX36ED
107	LY32058-002A	STICKER(A),SX56ED
	LY32058-001A	STICKER(A),FX36ED
108	LY32060-002A	STICKER(C),SX56ED
	LY32060-001A	STICKER(C),FX36ED
109	LY20614-002B	TOP OPE UNIT,SX56ED
	LY20614-006B	TOP OPE UNIT,FX36ED
110	LY20613-001A	ZOOM UNIT
111	LY20615-002A	REAR UNIT,SX56ED
	LY20615-003A	REAR UNIT,FX36ED
114	LY32061-003A	STICKER(D),FX36ED
	LY32061-001A	STICKER(D),SX56ED
115	QYSLSF2060D	SCREW,X5
116	QYSLSF2060D	SCREW,X3
117	QYSLSF2060D	SCREW,X3
118	QYSLSF2060D	SCREW,X2
119	QYSLSP2030D	SCREW
120	QYSLSF2060D	SCREW,X2
121	QYSLSF2050Z	SCREW,X3
122	QYSLSF2060D	SCREW
123	QYSLSF2060D	SCREW
124	QYSLSF2060D	SCREW,X4
125	QYSLSF2060D	SCREW,X2
126	QYSLSF2060D	SCREW
127	QYSLSP2030D	SCREW
128	QYSLSF2060D	SCREW,X2
130	LY20678-001A	FRAME ASSY,SX56ED

# △ REF No.	PART No.	PART NAME, DESCRIPTION
	LY20678-002A	FRAME ASSY,FX36ED
130A	YQ31843	BASE
130B	QYSLSF2060D	SCREW,X2
130C	LY30029-0A4A	SPACER(A)
130D	LY41082-001A	CUSHION(OP),X2
130E	YQ43810-1-1	CONTACT(LIGHT),X2,SX56ED
130F	WJM0167-001A	E-SI C WIRE C-F,SX56ED
131	LY42758-001A	S.CASE(MAIN)
132	QYSPSTU1725M	SCREW
133	LY41173-001A	SPECIAL SCREW,X2
134	QYSLSF1750D	SCREW
135	LY30018-050A	SPECIAL SCREW,X2
136	QYSLSF2060D	SCREW
137	WJT0039-001A	E-CARD WIRE,OP-MAIN CN15
138	QYSLSF2060D	SCREW, B,C,D
140	LY30514-001F	FRONT FRAME ASSY
140A	YQ44144-1-1	TAPE GUIDE
141	SPSH1725M	SCREW,X2
148	LY30904-001A	BRACKET(MECHA)
149	YQ44457-3	SCREW,X2
150	YQ31752M	C.HOUSING ASSY
151	YQ44457-3	SCREW,X4
152	LY31294-001B	C.COVER INSIDE
153	LY31296-001A	BRACKET(C.C/S)
154	LY32041-001B	BUTTON(P)ASSY
154A	LY30002-049A	COMPRESSION SPRING
155	LY32038-001A	UPPER COVER(S)ASSY

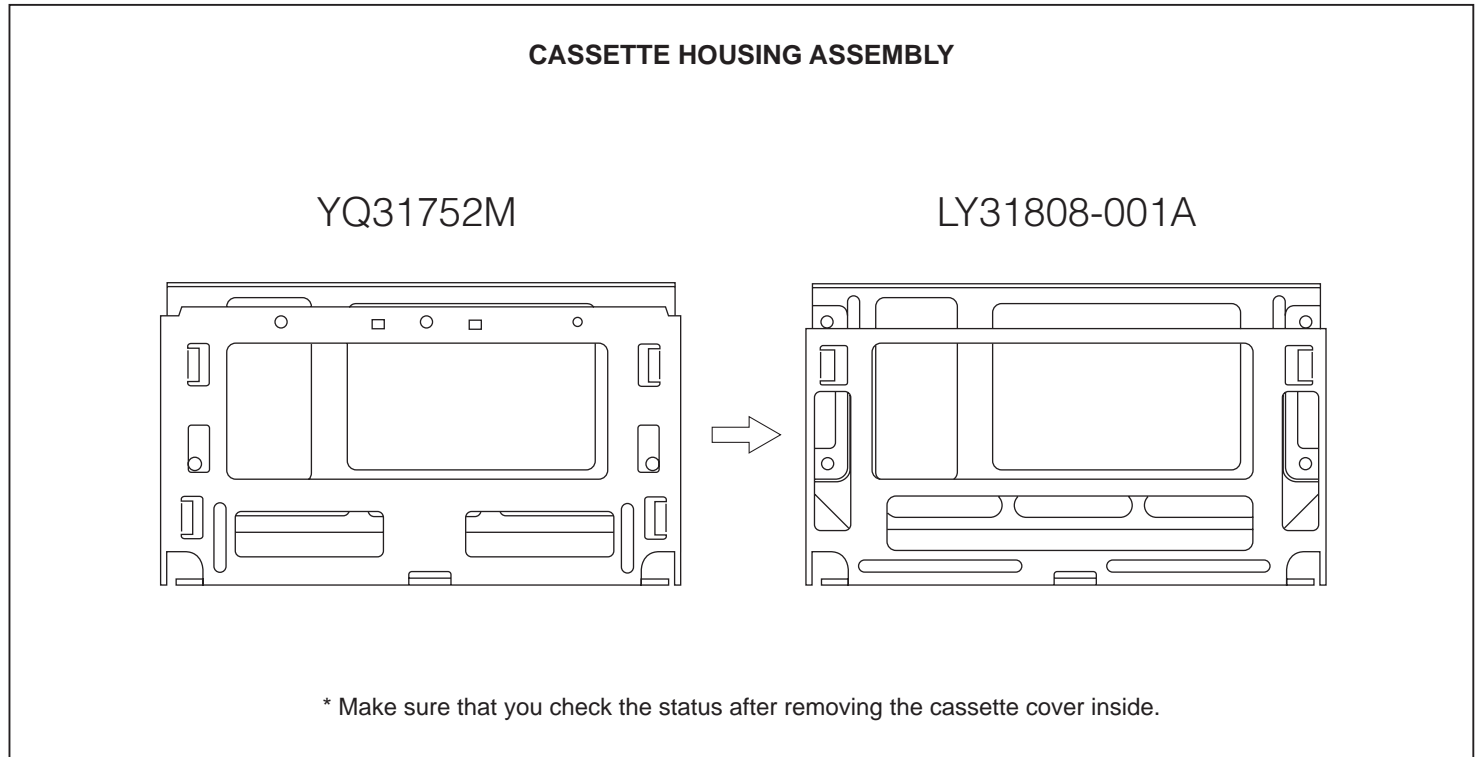
**– OPTICAL BLOCK SECTION –**

251	LY30948-003A	OP BLOCK ASSY
251A	PTY30948-002	FOCUS MOTOR
251B	PTY30948-301	ZOOM MOTOR
251C	PTY30151-016	SCREW,X9
251D	PTY30948-006	IRIS MOTOR UNIT,INCL.FPC
252	QYSPSGU2080Z	SCREW,X2
253	LY31441-001A	SPACER RUBBER
254	LY41756-001A	OPTICAL LPF
255	LY20346-001A	CCD SPACER
256	LY30018-072A	SPECIAL SCREW
257	LYH40132-002A	CCD BASE ASSY

## ABOUT CHANGES ON MECHANISM ASSEMBLY <M3> AND FINAL ASSEMBLY <M2>

The mechanism assembly and final assembly of the GR-FX36ED will be changed from the models in production halfway.

The differences in the cassette housing assembly parts have been mentioned to distinguish the main body, and therefore carry out repairs and parts replacement upon careful check and confirmation.



**Note :** Concerning contents and details that are not covered by this service manual, it is requested that you refer to Service Manual No.86590 (GR-FX12EG).

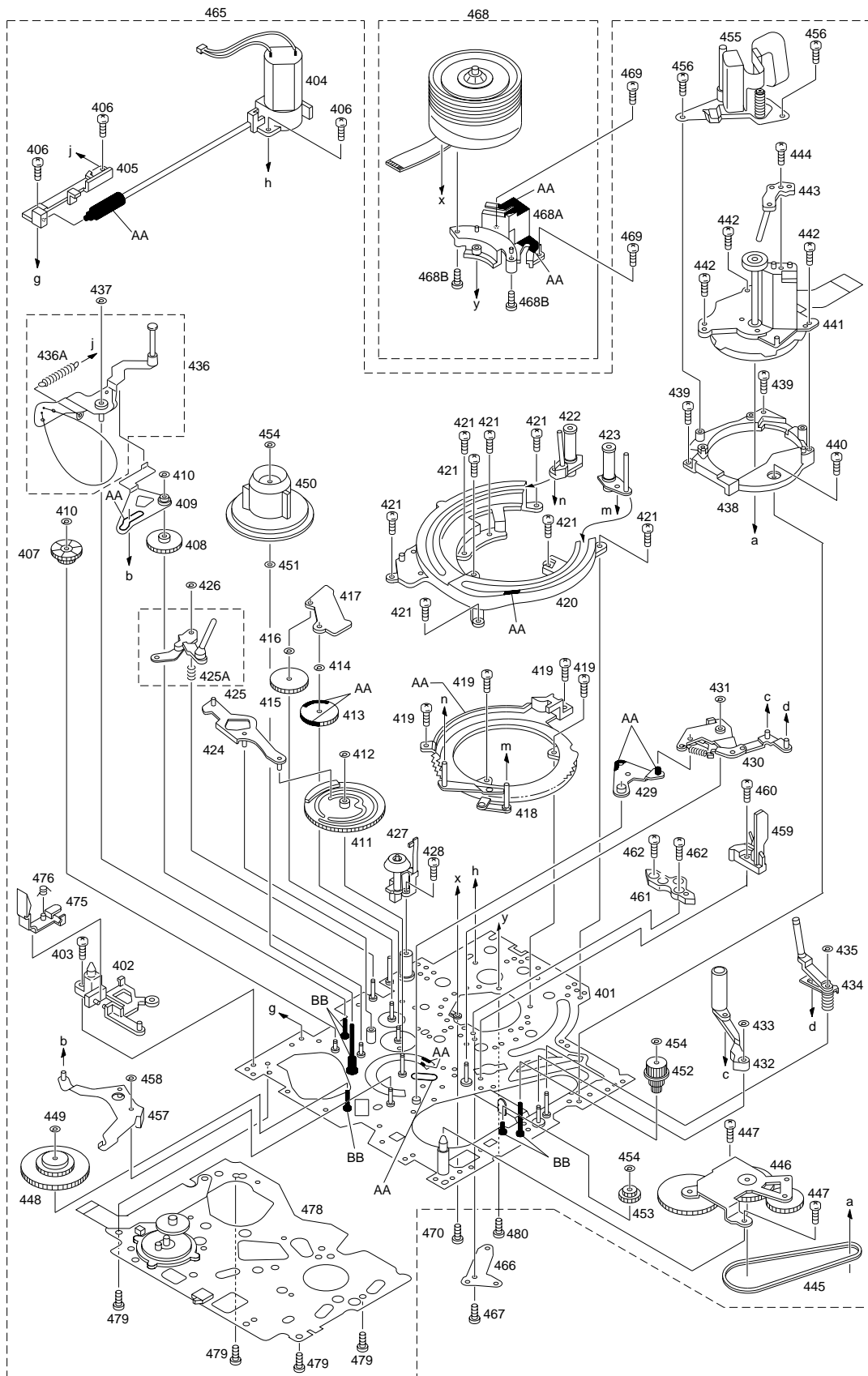
**Note :** In case of YQ31752 refer to page 5-7.  
In case of LY31808-001 refer to page 5-9.

### 5.3 MECHANISM ASSEMBLY <M3>

— FOR FX36ED —

#### BEWARE OF BOGUS PARTS

Parts that do not meet specifications may cause trouble in regard to safety and performance. We recommend that genuine JVC parts be used.



Classification	Part No.	Symbol in drawing
Grease	KYODO-SH-P	AA
Oil	YTU94027	BB

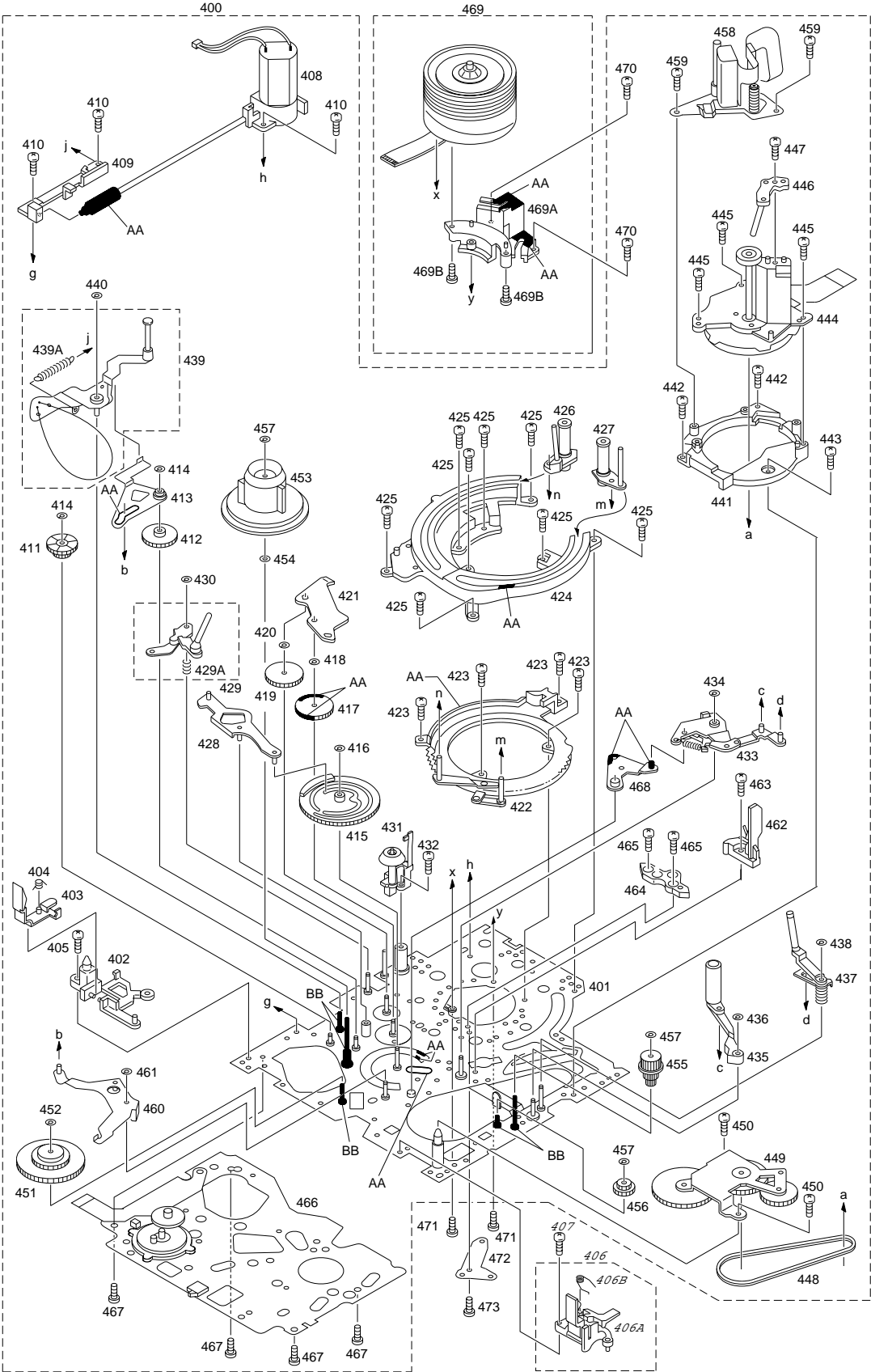
**NOTE:** The section marked in **AA** and **BB** indicate lubrication and greasing areas.

# ▲ REF No.	PART No.	PART NAME, DESCRIPTION	# ▲ REF No.	PART No.	PART NAME, DESCRIPTION
*****			457	YQ43743B	EJECT LEVER ASSY
<b>MECHANISM ASSEMBLY &lt;M3&gt;</b>			458	PQM30017-27	SLIT WASHER
401	LY20182-001E	MAIN DECK ASSY	459	YQ31833-1-1	LED GUIDE
402	YQ32218	C.GUIDE(L)	460	YQ44457	SCREW
403	YQ44457	SCREW	461	YQ43818	DRUM SPACER
404	YQ31856A-3	MOTOR BRACKET ASSY	462	YQ44457	SCREW,X2
405	YQ20793	WORM BRACKET	465	YMA0027A	MECHA(A) ASS'Y
406	YQ44457	SCREW,X3	466	YU42051	BRUSH
407	YQ31783	WHEEL GEAR	467	YQ44457-3	SCREW
408	YQ44328	MIDDLE GEAR	468	YDV2099A	DRUM ASSY
409	YQ43849B	CANCEL LEVER ASSY	468A	YDM1003-1-5	CATCHER
410	PQM30017-27	SLIT WASHER,X2	468B	QYSPSPU1735M	SCREW,X2
411	YQ20827-2-1	CONTROL CAM	469	YQ44457	SCREW,X2
412	PQM30017-25	SLIT WASHER	470	SPSH1740Z	SCREW
413	YQ43853A	LOADING GEAR(T)ASSY	475	YQ32219	SW.LEVER(L)
414	PQM30017-27	SLIT WASHER	476	YQ44422-1-1	TORSION SPRING
415	YQ43852A	LOADING GEAR(S)ASSY	478	QSW0745-001	ROTARY ENCODER
416	PQM30017-27	SLIT WASHER	479	YQ44457-2	SCREW,X4
417	YQ43634	COVER PLATE	480	SPSH1740Z	SCREW
418	YQ43635C-12	LOADING RING ASSY	<b>Note : Changes will be made from the models in production halfway.(See Pages 5-6)</b>		
419	YQ44457	SCREW,X4			
420	YQ10516-1-11	GUIDE RAIL			
421	YQ44457-5	SCREW,X8			
422	YQ43646A-4	SUPPLY POLE BASE ASSY			
423	YQ43654A-11	TAKE-UP POLE BASE ASSY			
424	YQ44439A-2	DRIVE LEVER ASSY			
425	YQ43663C-7	SLANT ARM ASSY			
425A	YQ43670	TOR.SPRING(S)			
426	PQM30017-27	SLIT WASHER			
427	YQ44436A-3	ROLLER BASE ASSY			
428	YQ44457	SCREW			
429	YQ32230	LINK LEVER			
430	YQ43682B-9	LINK ARM ASSY			
431	PQM30017-25	SLIT WASHER			
432	LY40018-001A	PINCH ROLLER ARM ASSY			
433	PQM30017-25	SLIT WASHER			
434	YQ44591A-7	TAKE-UP GUIDE ARM ASSY			
435	PQM30017-27	SLIT WASHER			
436	YQ44199C-9	TENSION ARM ASSY			
436A	LY41515-001A	TENSION SPRING			
437	PQM30017-27	SLIT WASHER			
438	YQ20797-1-5	MOTOR BASE			
439	YQ44457	SCREW,X2			
440	YQ44460	SCREW			
441	YU42078-2	CAPSTAN MOTOR			
442	YQ44304	TAPPING SCREW,X3			
443	YQ43708A-3	SLANT POLE BASE ASSY			
444	YQ44304	TAPPING SCREW			
445	YQ43710	TIMING BELT			
446	YQ43711B-10	CENTER PULLEY UNIT			
447	YQ44457-2	SCREW,X2			
448	YQ43729A-3	SUPPLY CLUCH ASSY			
449	PQM30017-27	SLIT WASHER			
450	YQ31861-1-7	REEL DISC			
451	Q03093-835	WASHER			
452	YQ31787	TAKE-UP GEAR			
453	YQ43737	BRAKE SUB GEAR			
454	PQM30017-27	SLIT WASHER,X3			
455	YQ43738D-23	A/C HEAD UNIT			
456	SPSN1750Z	SCREW,X2			



5.4 MECHANISM ASSEMBLY <M3>  
— FOR FX36ED,SX56ED —

**BEWARE OF BOGUS PARTS**  
Parts that do not meet specifications may cause trouble in regard to safety and performance. We recommend that genuine JVC parts be used.



Classification	Part No.	Symbol in drawing
Grease	KYODO-SH-P	AA
Oil	YTU94027	BB

**NOTE :** The section marked in **AA** and **BB** indicate lubrication and greasing areas.

#	△	REF No.	PART No.	PART NAME, DESCRIPTION	#	△	REF No.	PART No.	PART NAME, DESCRIPTION
*****					453		YQ31861-1-7		REEL DISC
<b>MECHANISM ASSEMBLY &lt;M3&gt;</b>					454		LY42755-001A		WASHER
400			YMA0030A-E	MECHA(B)ASSY,FX36ED	455		LY31924-001A		TAKE-UP GEAR
			YMA0031A-E	MECHA(B)ASSY,SX56ED	456		LY42738-001A		BRAKE SUB GEAR
401			LY20612-001A	MAIN DECK ASSY	457		LY42754-003A		SLIT WASHER,X3
402			LY31817-001A	CAS.GUIDE(L)	458		LY42544-001A		A/C HEAD UNIT
403			LY31815-001A	SW.LEVER(L)	459		SPSN1750Z		SCREW,X2
404			LY42581-001A	TORSION SPRING	460		LY42517-001A		EJECT LEVER ASSY
405			LY42722-001A	SCREW	461		LY42754-003A		SLIT WASHER
406			YQ44339A-7	C.GUIDE(R)ASSY,SX56ED	462		YQ31833-1-1		LED GUIDE
406A			YQ32162-1-3	SW.LEVER(R),SX56ED	463		LY42722-001A		SCREW
406B			YQ44340-1-4	TORSION SPRING,SX56ED	464		LY42729-001A		DRUM SPACER
407			LY42819-001A	SCREW,SX56ED	465		LY42722-001A		SCREW,X2
408			LY31826-001A	MOTOR BRACKET ASSY	466		QSW0888-001		ROTARY ENCODER,FX36ED
409			YQ20793	WORM BRACKET			QSW0888-002		ROTARY ENCODER,SX56ED
410			LY42722-001A	SCREW,X3	467		LY42722-002A		SCREW,X4
411			LY31925-001A	WHEEL GEAR	468		LY31814-001A		LIMK LEVER
412			LY42730-001A	MIDDLE GEAR	469		YDV2099A		DRUM ASSY
413			LY42521-001A	CANCEL LEVER ASSY	469A		YDM1003-1-5		CATCHER
414			LY42754-003A	SLIT WASHER,X2	469B		QYSPSPU1735M		SCREW,X2
415			YQ20827-2-1	CONTROL CAM	470		LY42722-001A		SCREW,X2
416			PQM30017-25	SLIT WASHER	471		SPSH1740Z		SCREW,X2
417			LY42733-001A	LOADING GEAR(T)ASSY	472		YU42051		BRUSH
418			LY42754-003A	SLIT WASHER	473		LY42722-003A		SCREW
419			LY42732-001A	LOADING GEAR(S)ASSY	<b>Note :</b> In case of YQ31752 refer to page 5-7. In case of LY31808-001 refer to page 5-9.				
420			LY42754-003A	SLIT WASHER					
421			LY42403-001A	COVER PLATE					
422			LY42452-001A	LOADING RING ASSY					
423			LY42728-001A	SCREW,X4					
424			LY10239-001A	GUIDE RAIL					
425			LY42728-001A	SCREW,X8					
426			LY30161-001B	POLE BASE(S)ASSY					
427			LY30162-002A	POLE BASE(T)ASSY					
428			LY42523-001A	DRIVE LEVER ASSY					
429			LY42545-001A	SLANT ARM ASSY					
429A			LY42547-001A	TORSION SPRING(S)					
430			LY42754-003A	SLIT WASHER					
431			LY42739-001A	ROLLER BASE ASSY					
432			LY42722-001A	SCREW					
433			LY42494-001A	LINK ARM ASSY					
434			LY31814-001A	LINK LEVER					
435			LY40018-002A	PINCH ROLLER ARM ASSY					
436			PQM30017-25	SLIT WASHER,X2					
437			LY42541-001A	TAKE-UP GUIDE ARM ASSY					
438			LY42754-003A	SLIT WASHER					
439			LY42571-001A	TENSION ARM ASSY					
439A			LY42669-001A	TENSION SPRING					
440			LY42754-003A	SLIT WASHER					
441			YQ20797-1-5	MOTOR BASE					
442			LY42722-001A	SCREW,X2					
443			YQ44460	SCREW					
444			QAR0116-001	CAPSTAN MOTOR					
445			YQ44304	TAPPING SCREW,X3					
446			LY42731-001A	SLANT POLE BASE ASSY					
447			YQ44304	TAPPING SCREW					
448			YQ43710-2	TIMING BELT					
449			LY42678-001A	CENTER PULLEY UNIT					
450			LY42722-002A	SCREW,X2					
451			LY42670-001A	SUPPLY CLUTCH ASSY					
452			LY42754-003A	SLIT WASHER					